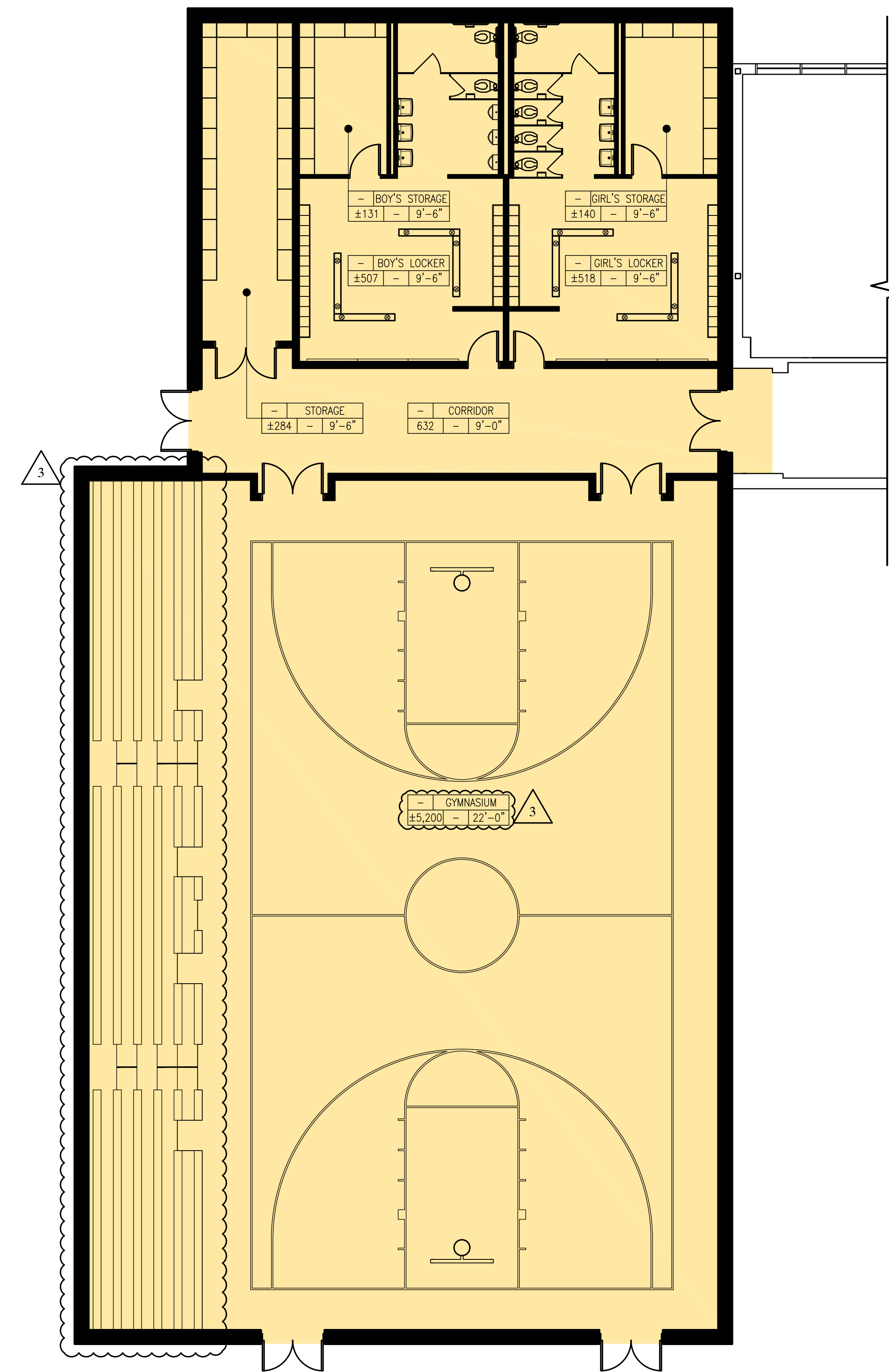


PROPOSED IMPROVEMENTS FOR
THE ROCKAWAY BOROUGH
BOARD OF EDUCATION:
NEW ADDITION
AT THOMAS JEFFERSON
MIDDLE SCHOOL

95 EAST MAIN STREET
ROCKAWAY, NJ 07866
BLOCK: 38 LOT: 30

STATE PROJ. NO.: 27-4480-050-18-2000



- 3 06-15-18 SCHEMATIC RESUBMISSION
- 2 04-30-18 STATE RESUBMISSION
- 1 03-23-18 ISSUED FOR STATE APPROVAL

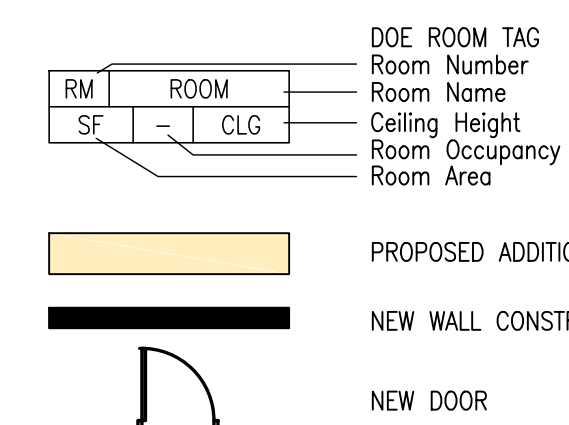
| REV | DATE | REMARK |
|-----|--------------------------------|-------------|
| □ | Marc R. Parette A.I.A. | |
| | NCARB Registration | 44264 |
| | New Jersey Architect | 10436 |
| | New York Architect | 024312 |
| | Pennsylvania Architect | 014798B |
| | Maryland Architect | 10445 |
| | New Jersey Planner | 4981 |
| | Alabama Architect | 5996 |
| | Louisiana Architect | 6261 |
| | Florida Architect | AR 93131 |
| | Michigan Architect | 1301053053 |
| | Nevada Architect | 6311 |
| □ | Gregory J. Somjen A.I.A. | |
| | NCARB Registration | 47178 |
| | New Jersey Architect | 13349 |
| | Massachusetts Architect | 9629 |
| | Delaware Architect | 6616 |
| | Virginia Architect | 0401 011210 |
| | Texas Architect | 15996 |
| | Connecticut Architect | 8622 |
| | New York Architect | 032435-1 |
| | Nevada Architect | 6280 |
| | District Of Columbia Architect | 101294 |
| □ | William H. Bannister, A.I.A. | |
| | New Jersey Architect | 19142 |
| □ | Joshua D. Thompson, A.I.A. | |
| | New Jersey Architect | 20153 |

FURNITURE PLAN

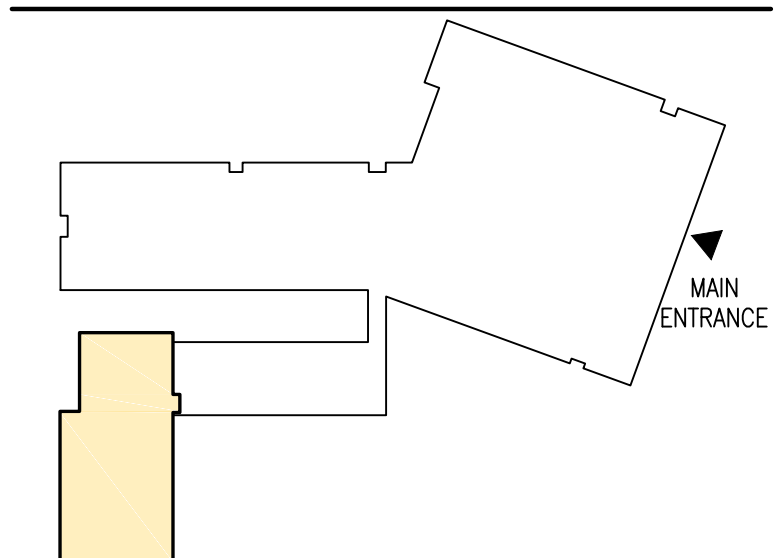


SC: 1/8" = 1'-0"

SYMBOL LEGEND:



KEY PLAN:



FURNITURE
PLAN

THE SCALE REPRESENTED ON THESE DRAWINGS IS ONLY VALID
IF THE DRAWING IS 30" x 42". DRAWINGS WHICH ARE NOT
PLOTTED AT THE SPECIFIED SHEET SIZE ARE NOT TO SCALE.

| WB | SHEET NUMBER |
|-----------------|--|
| PROJECT MANAGER | A3.01 |
| BV/LC | |
| DRAWN BY | |
| 7584 | |
| PROJECT NUMBER | |
| 23 MARCH 2018 | |
| RELEASE DATE | © COPYRIGHT 2018 PARETTE SOMJEN ARCHITECTS, L.L.C. |